

iDee InfoCom



**Know where your vehicles
are before your drivers do!**



Vehicle Tracking System



IDee Tracker is a Web-based User-Friendly GPS Vehicle Tracking and Fleet Management Solution. Using wireless technology it provides real-time vehicle / asset location information and has comprehensive telemetric options. The modular, flexible and scalable architecture can be adapted to any fleet size depending on customer needs. As standard, iDeeTracker includes an in-built map engine with rich GIS features and comprehensive set of business report. With optional RFID integration, the system can be extended to support applications including container monitoring trailer identification and petro-chemical carriers.

Essential Accessories



Control Room Infrastructure

- ▶ Hardware and software
- ▶ Communication and infrastructure

Vehicle Tracking System

- ▶ Secure web based application system
- ▶ Mysql database system
- ▶ Backend integration with legacy system

Vehicle Mounting Hardware And Accessories

- ▶ GPS block box telemetric system with communication interface
- ▶ RFID readers and RFID tags and trailer tracking

Benefits of the System



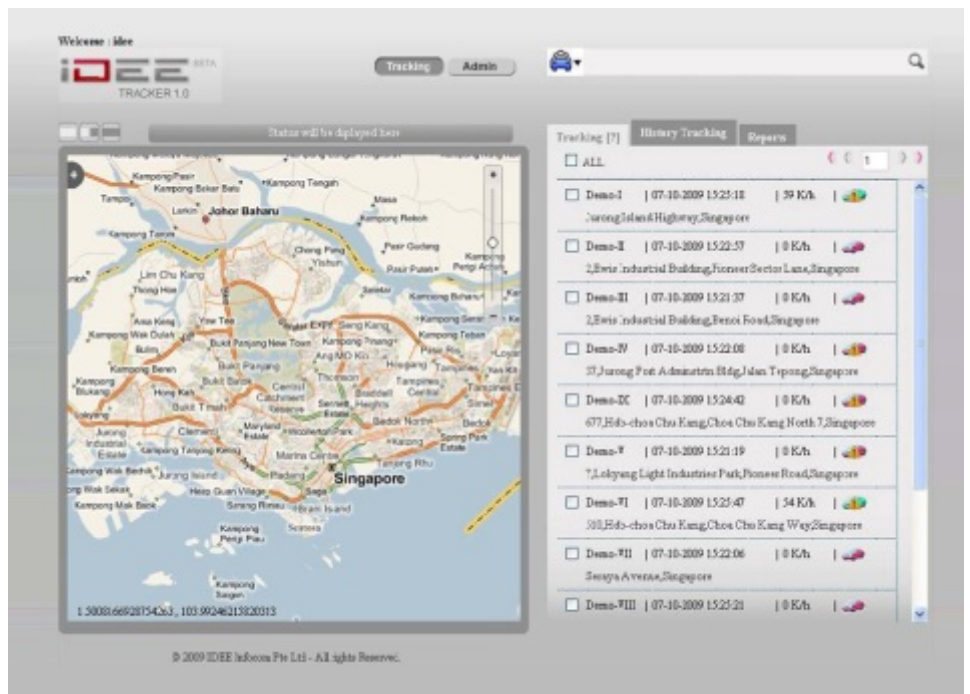
- ▶ Minimize the paper work & manual intervention
- ▶ Secured management of the vehicles remotely
- ▶ Helps to understand the utilization of vehicles & their productivity
- ▶ A tool that helps to cross check while making payments to drivers based on the trips claimed, hours on duty etc.
- ▶ Brings substantial reduction in maintenance costs
- ▶ Geo-fence as a delivery proof
- ▶ Sms based query helps to know vehicle location using a mobile phone and sms alerts
- ▶ Trip analysis and eta calculation
- ▶ Back end integration with customer network
- ▶ Ad-hoc report generator providing unlimited reports functionality
- ▶ Improved customer service
- ▶ Automated administrative functions

Security Features



- ▶ Secured, encrypted communication between the vehicle mounting device and communication server.
- ▶ Optional dedicated leased line between the telco service provider and the Infrastructure for the data protection.
- ▶ Secured infrastructure when configured using intranet network.

Project Screen Shots



IDEE Vtrak

User Interface Design (GUI)

Real-time Tracking would enable the user to track Vehicle Current Location. The Vehicle position would be displayed on a detailed digital map. This would be central monitoring for Vehicles. The system would support multi window map viewing with individual zoom, pan and other map viewing facilities.



IDEE Vtrak

Reports Module

The web based system will be having various report and analysis module to analyze the data.

idee Infocom Pte Ltd.,

No.8 Kaki Bukit Road 2, #04-19 Ruby Warehouse Complex, Singapore 417841.

Tel : +65-62936461 Mob : +65-92381245 Email : sales@idee.sg

For More Information about Idee Infocom visit : www.idee.sg

