



iDEE

AirTrak

Aviation sector

**Optimize Ground Support
Equipment (GSE)
Utilization and Improve
Cost Efficiencies.**

**Real-time
Airport Visibility**



Ground Support Equipment (GSE)

AirTrak solution, developed by Idee Infocom, enables real-time management and planning of all motorized aircraft ground support equipment (GSE). As a comprehensive, web-based solution, AirTrak offers operation managers the ability to accurately locate, track, and proactively monitor vehicle and ground support equipment on the apron and beyond. With AirTrak, fleet managers can now optimize ground handling operations' activities to increase productivity through improved vehicle and equipment utilization and manpower, while enhancing equipment safety and longevity.



Viewer

Real-time Airport Visibility

- ▶ Real-time Airport Visibility
- ▶ Visualize Business Processes
- ▶ Improve Fleet Efficiency
- ▶ Proactively Monitor Vehicle And Driver Activity
- ▶ Effectively Analyze Ground Support Operations



Data

Improve GSE Service Levels and Efficiency

- ▶ Identify And Reduce Unnecessary Engine Hours
- ▶ Increase In GSE Availability To Service Flights
- ▶ Enhance Fuelling Efficiency
- ▶ Reduce GSE And Vehicle Running Costs
- ▶ Minimize Driver Miscommunications
- ▶ Reduce Carbon Footprint



i Safe

Improve GSE & Vehicle Safety and Security

- ▶ Improve GSE Safety & Security
- ▶ Reduce The Misuse Of GSE And Vehicles
- ▶ Control The GSE And Vehicle Use And Journeys
- ▶ Increase Driver Accountability And Responsibility
- ▶ Prevent The Use Of GSE And Vehicles By Unauthorized Operators
- ▶ Improve GSE And Vehicle Accident Investigation



i Maintain

Preventive GSE Maintenance

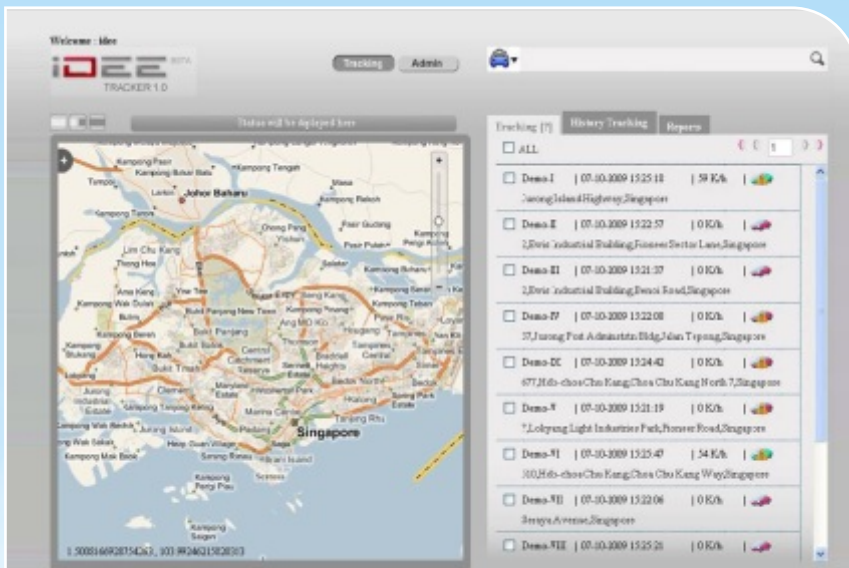
- ▶ Reduce Maintenance Costs
- ▶ Increase Equipment Availability
- ▶ Capture Accurate Engine Hours
- ▶ Improve Maintenance Planning
- ▶ Secure Aircraft Servicing
- ▶ Improve Safety And Security



i Report

Real-time GSE Analytics for Maximum Operational Performance

- ▶ Activity, Usage reports
- ▶ Day Summary report
- ▶ Summary Report
- ▶ Speed Graph and fuel monitory
- ▶ Un-authorized road, un-Authorized Stoppage report
- ▶ Added New Feature : Ad-Hoc Report Generator.



IDEE AirTrak

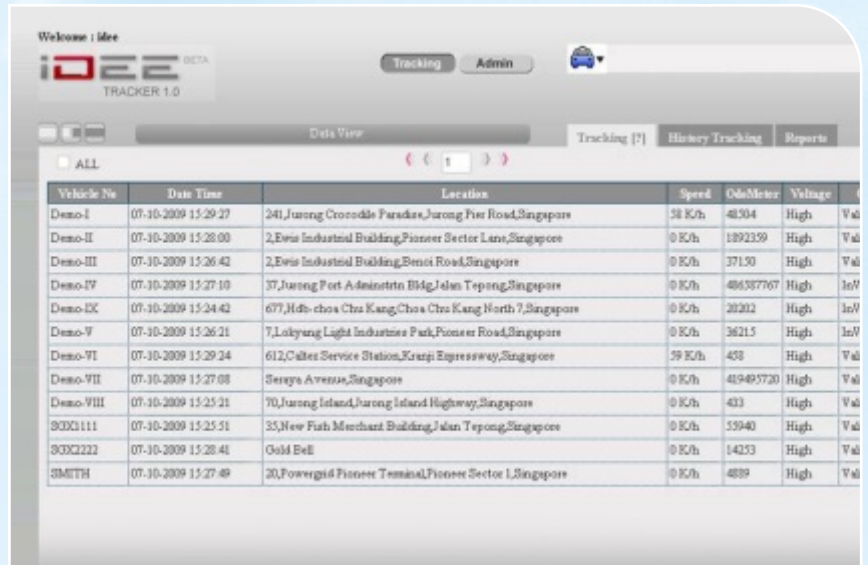
User Interface Design (GUI)

Real-time Tracking would enable the user to track Vehicle Current Location. The Vehicle position would be displayed on a detailed digital map. This would be central monitoring for Vehicles. The system would support multi window map viewing with individual zoom, pan and other map viewing facilities.

IDEE AirTrak

Dynamic Vehicle Status

This provides the screen shot of the Vehicle status using the feature called "Reverse Geo Coding". Where in customer can view the screen snapshot of all his fleet and the road where the vehicle is moving at this point of time. The Automatic status updates are done at on every minute.



IDEE AirTrak

Reports Module

The web based system will be having various report and analysis module to analyze the data.



IDEE Infocom Pte Ltd.,

60, Kaki Bukit Place, #10-14, Eunos Techpark, Singapore - 415979

Tel : +65-62936461 Mob : +65-92381245 Email : sales@idee.sg

For More Information about Idee Infocom visit : www.ideo.sg

AirTrak